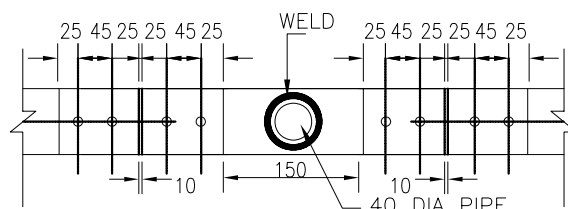


NOTE:

1. ALL NUTS, BOLTS AND WASHERS,  
GI PIPE AND WIRE MESH SHALL BE  
GALVANISED AS PER SPECIFICATION.
2. PIPE SLEEVE ENDS SHALL BE SEALED  
AFTER COMPLETION OF WORKS.
3. FOR WELDING DETAIL  
REFER SHEET 26 & 27



VIEW-A



EQUIPMENT EARTHING DETAILS  
DETAILS OF PIPE ELECTRODE  
IN TREATED EARTH PIT

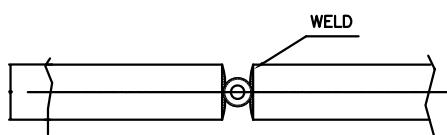
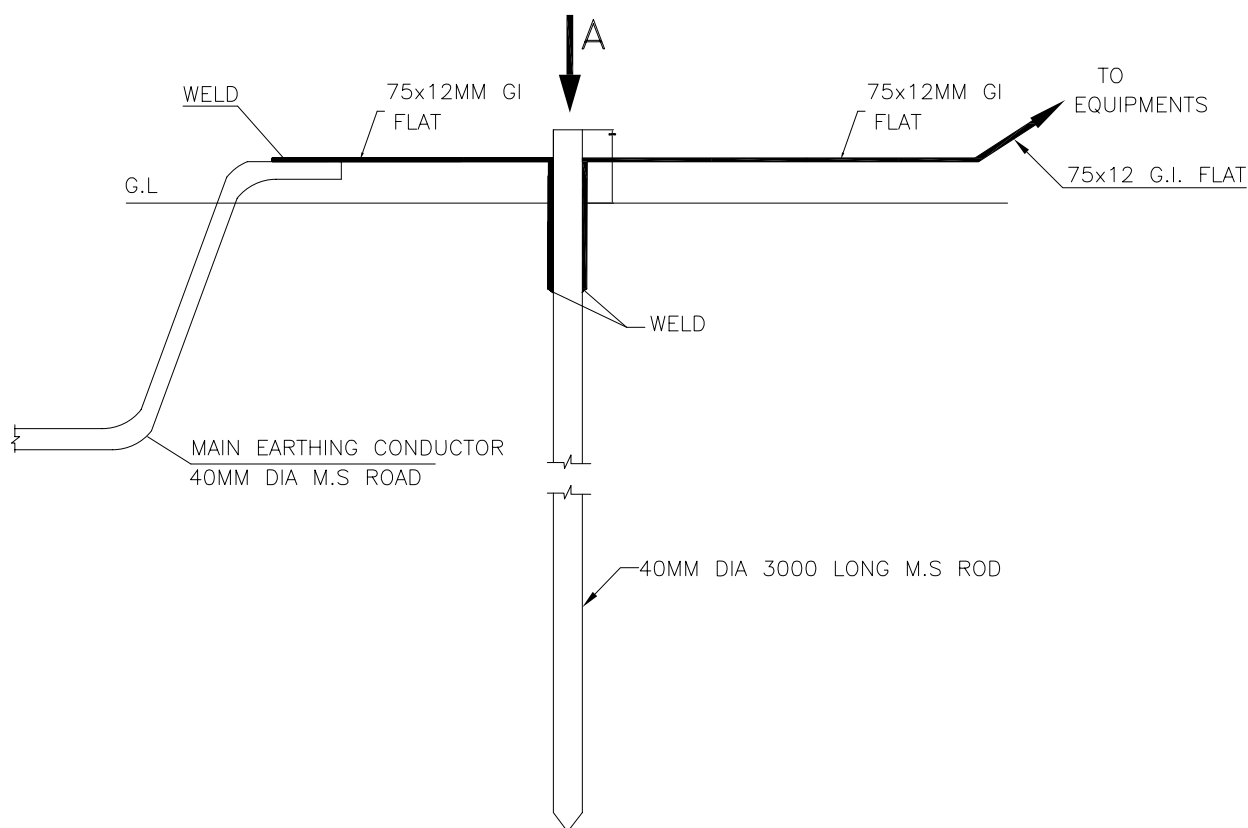
COMPUTERREF.NO.

DRG. No.

TB-4-344-509-013

REV. 00

SHEET No.  
15



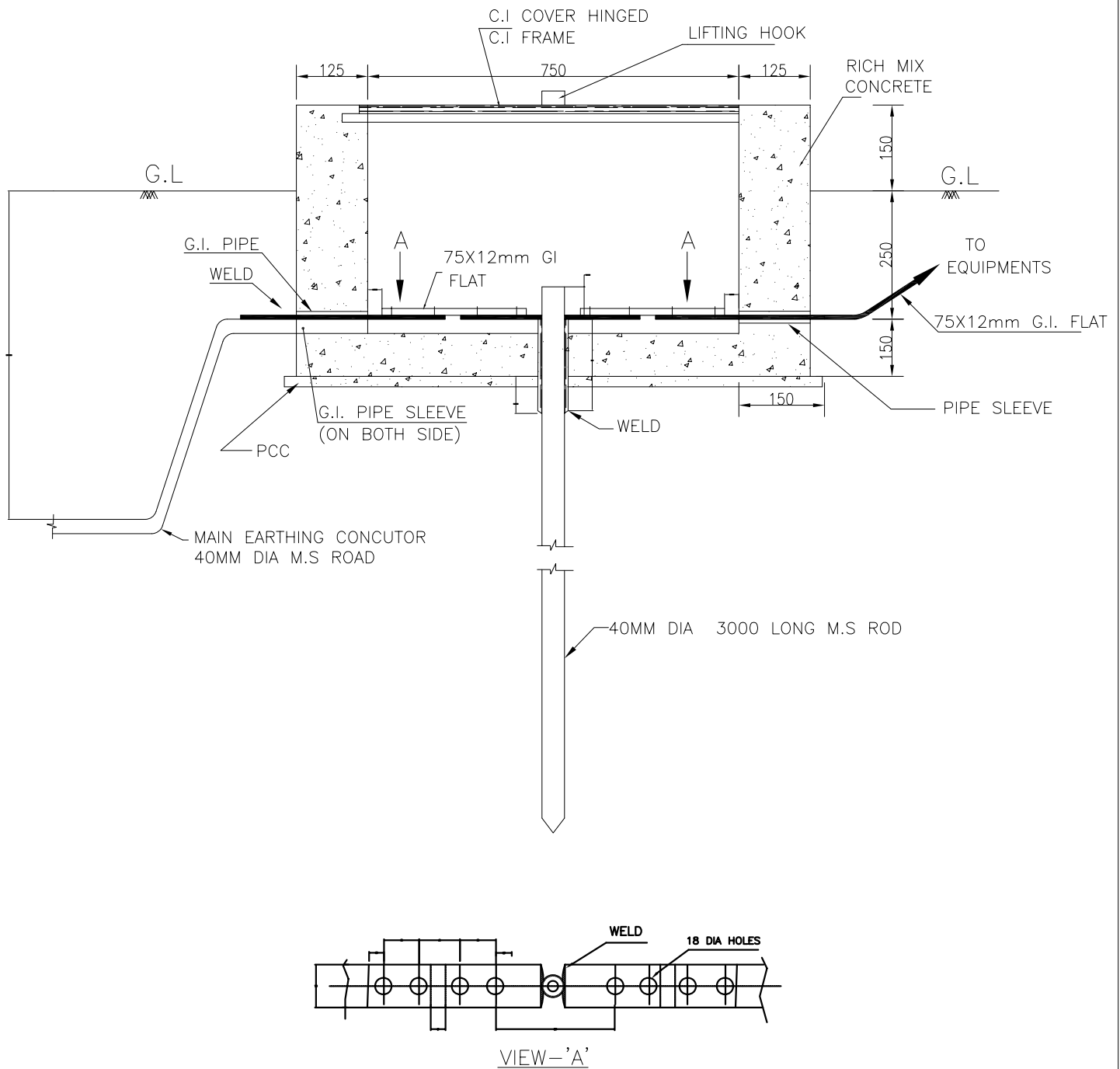
VIEW - 'A'

NOTES:-

1. SUPPLY OF FIXING BOLTS NUTS & WASHERS FOR GI FLAT EARTHING CONDUCTOR IS ALSO FORMS PART OF THE SCOPE.
2. TO BE USED FOR CONNECTING DOWN CONDUCTOR OF LIGHTNING PROTECTION SYSTEM.
3. ALL NUTS, BOLTS & WASHERS SHALL BE GALVANISED.



# EQUIPMENT EARTHING DETAILS ROD EARTH ELECTRODE WITHOUT TEST PIT



NOTES:-

1. SUPPLY OF FIXING BOLTS NUTS & WASHERS FOR GI FLAT EARTHING CONDUCTOR IS ALSO FORMS PART OF THE SCOPE.
2. TO BE USED FOR CONNECTING DOWN CONDUCTOR OF LIGHTNING PROTECTION SYSTEM, CVT & LA.
3. PIPE SLEEVE ENDS SHALL BE SEALED AFTER COMPRETION OF WORK.



# EQUIPMENT EARTHING DETAILS ROD ELECTRODE WITH TEST PIT

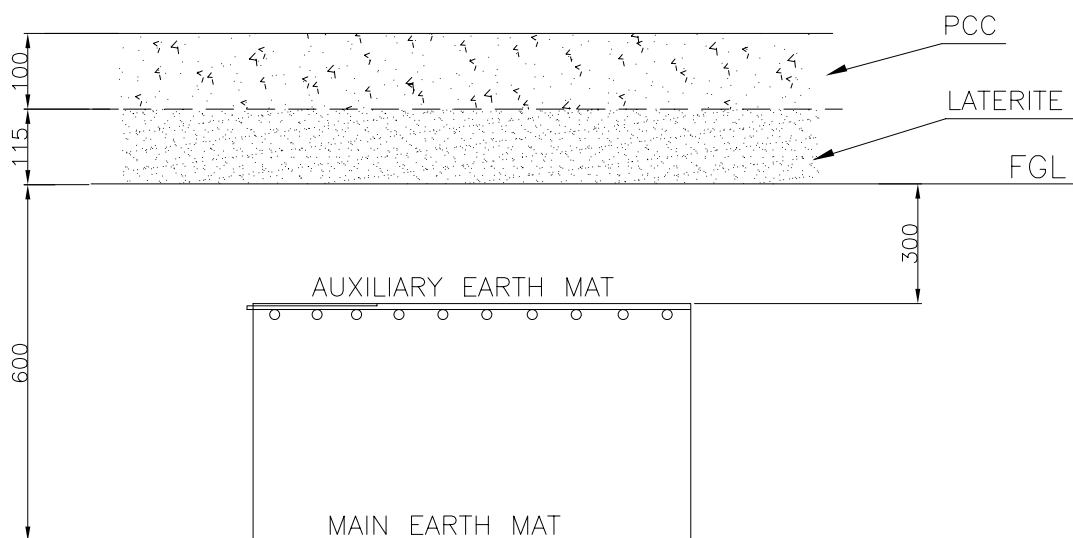
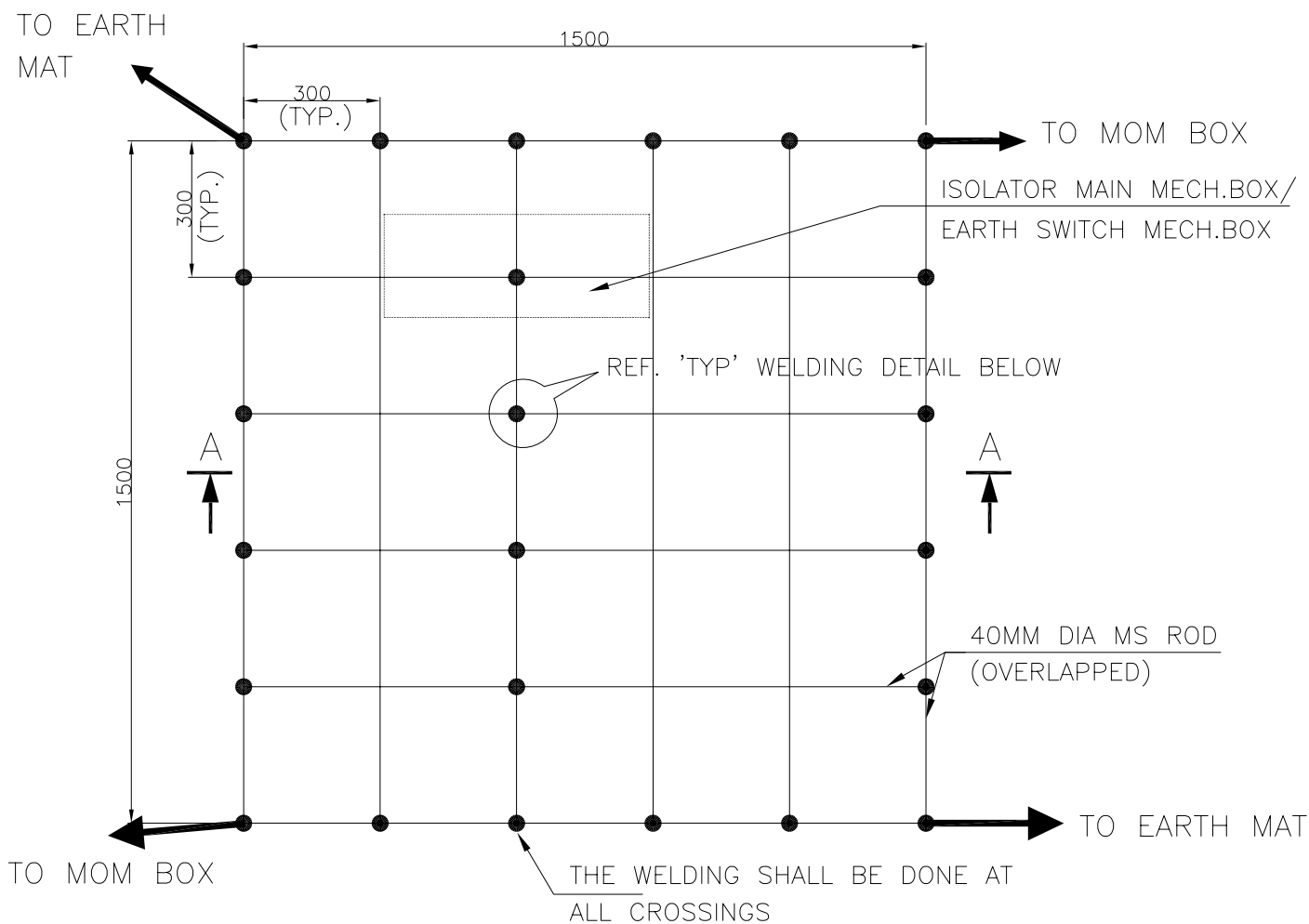
COMPU. DRG. REF.

DRG. No.

TB-4-344-509-013

REV. 00

SHEET No.  
17



## SECTION AA

### NOTE:

AUX. EARTH MAT SHALL BE SO POSITIONED THAT THE FOOT OF THE OPERATOR ALWAYS LIE OVER THE AUX. EARTH MAT AREA WHILE ATTENDING / OPERATING THE MECH. BOX THE CABLE TRENCH ROUTING SHALL BE PLANNED ACCORDINGLY.



## EQUIPMENT EARTHING DETAILS

### AUXILIARY EARTH MAT FOR ISOLATOR MAIN MECH.,E/S MECH. BOX & CB (TYP.)

COMPU. DRG. REF.

Report No.

TB-4-344-509-013

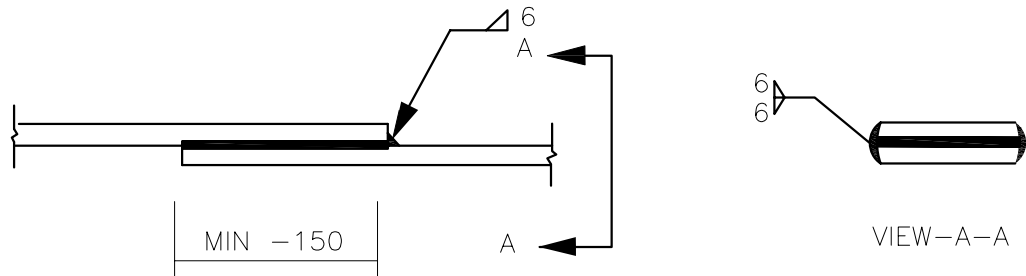
REV. 00

SHEET No.

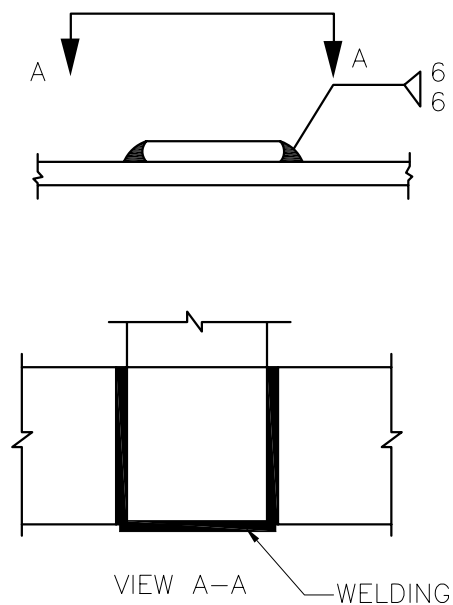
20

## STRIP TO STRIP (50X6mm or 75x12 mm FLAT ONLY)

### 1. STRAIGHT LAP JOINT/RISER



### 2. CROSS LAP JOINT



## EQUIPMENT EARTHING DETAILS WELDING DETAIL-1

COMPUTERREF.NO.

DRG. No.

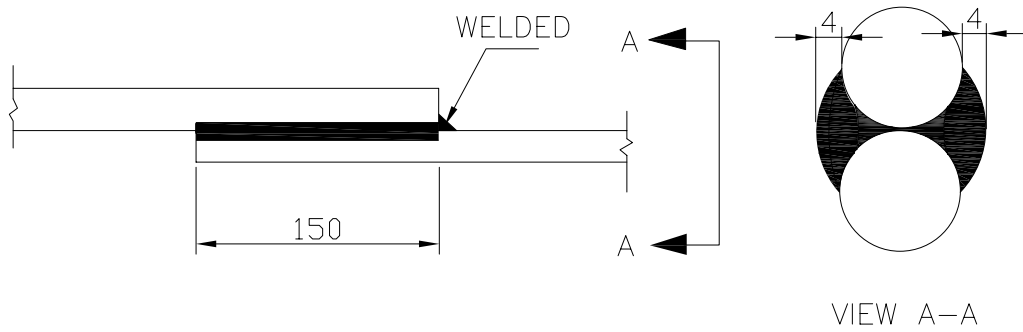
TB-4-344-509-013

REV. 00

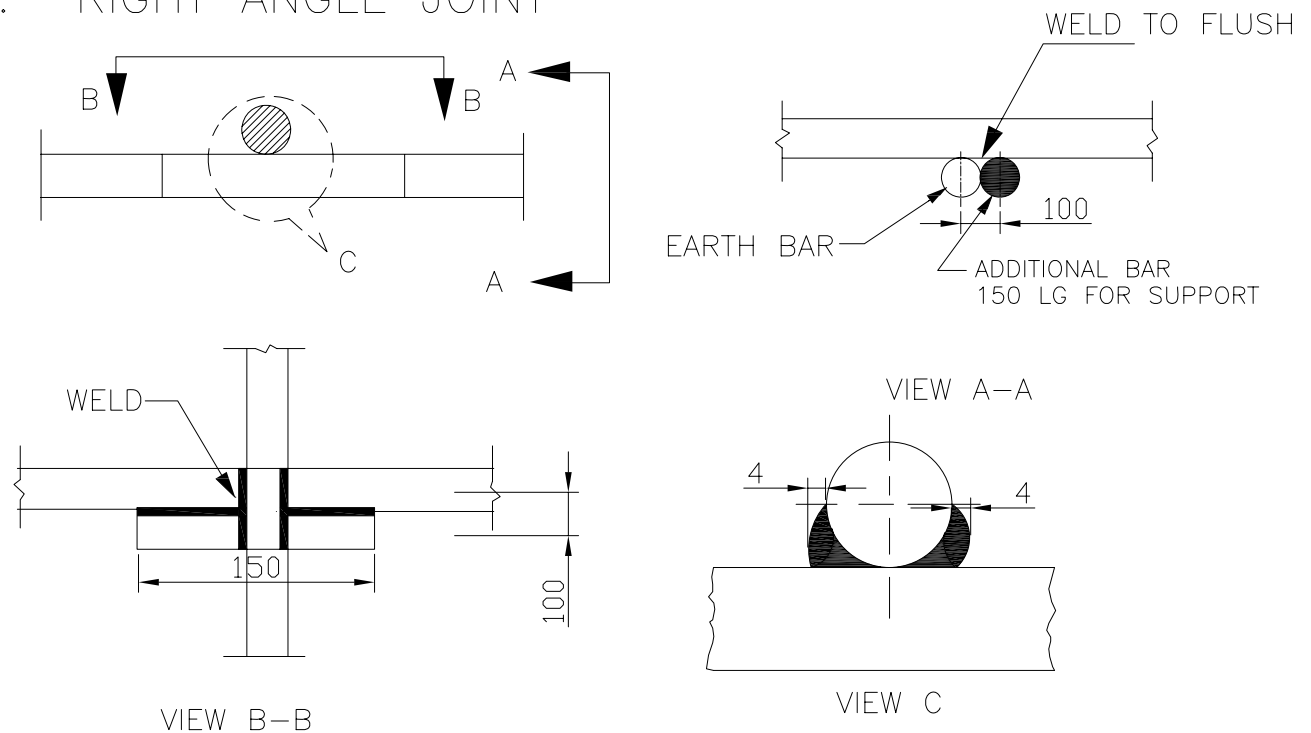
SHEET No.  
26

## ROD TO ROD

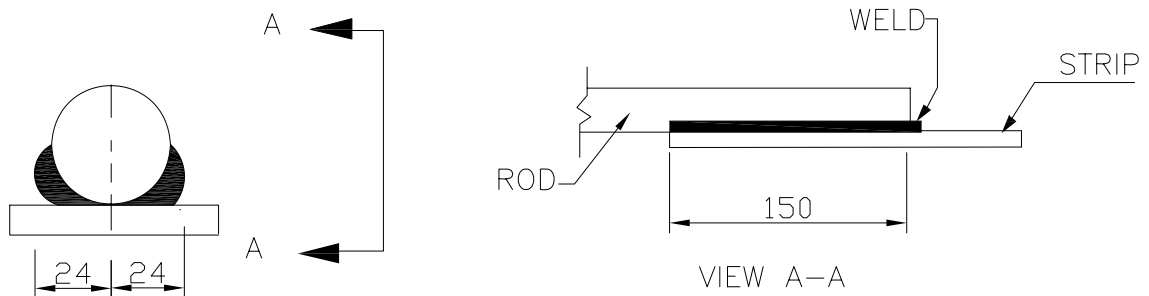
### 1. STRAIGHT LAP JOINT/RISER



### 2. RIGHT ANGLE JOINT



### 3. ROD TO STRIP



## EQUIPMENT EARTHING DETAILS

### WELDING DETAIL-2